



ST. JOHN ORGANIZATIONAL CHART

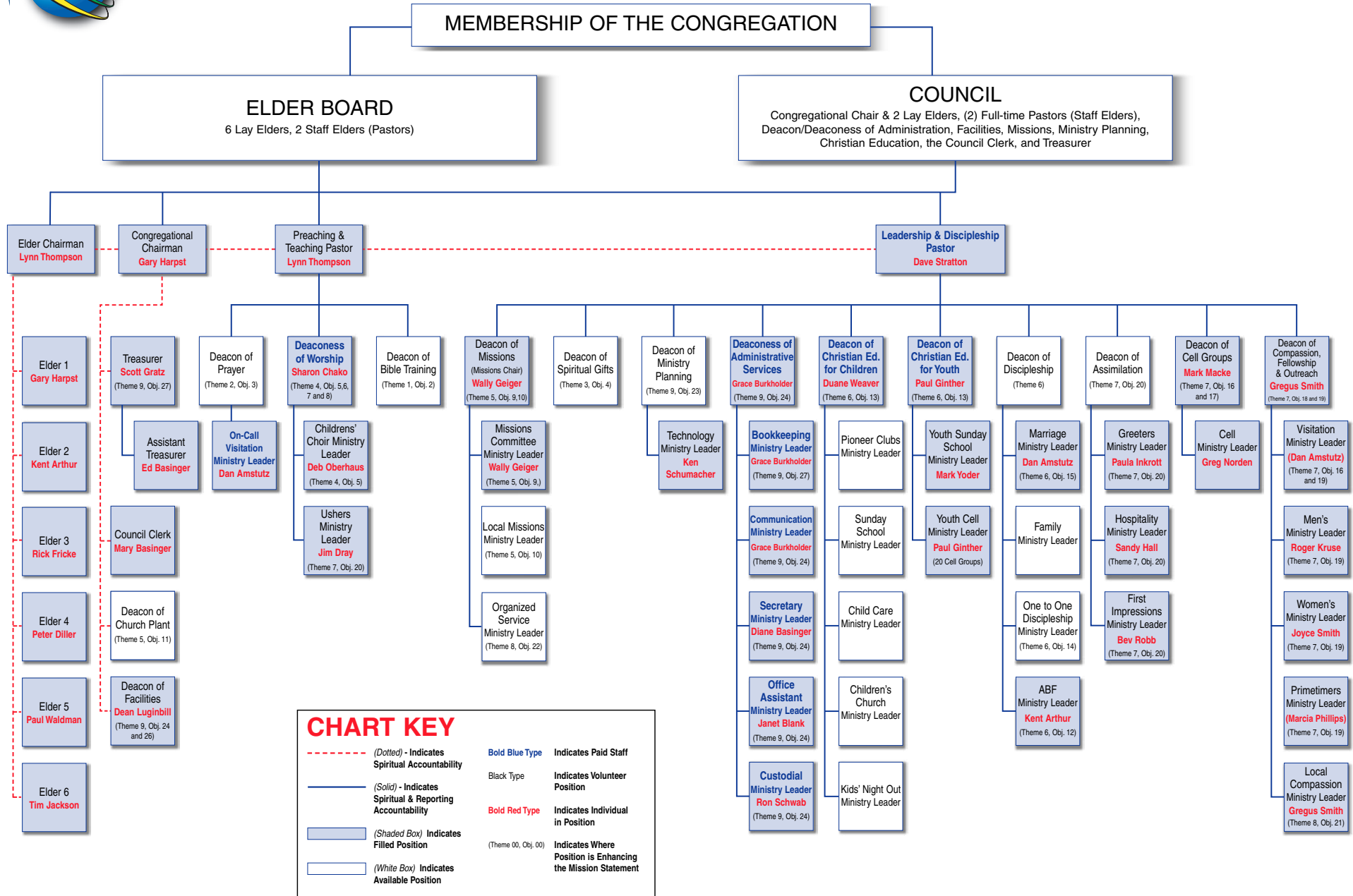


CHART KEY	
<i>(Dotted)</i> - Indicates Spiritual Accountability	Bold Blue Type Indicates Paid Staff
<i>(Solid)</i> - Indicates Spiritual & Reporting Accountability	Black Type Indicates Volunteer Position
<i>(Shaded Box)</i> Indicates Filled Position	Bold Red Type Indicates Individual in Position
<i>(White Box)</i> Indicates Available Position	(Theme 00, Obj. 00) Indicates Where Position is Enhancing the Mission Statement